

Test Report

Report No.: CTT2312015455EN

Page 1 of 9

Applicant: PAR BAKULA SP.J.

Address: BYSEWSKA 30, 80-298 GDANSK, POLAND

Sample Received Date: Dec. 29, 2023

Completed Date: Jan. 05, 2024

Report Date: Jan. 06, 2024

The following merchandise was (were) submitted and identified on behalf of the applicant as:

Sample Name: stainless steel mug

Model No.: R08343.06, R08311.02, R08342.79, R08390, R08307, R08490.02,
R08490.04, R08490.08

Sample Color: white, black, gold, silver, blue, red

Test Result(s): Please refer to next page(s).

Test Requested and Conclusion(s):

No.	Standard and Requirement	Conclusion(s)
1	CM/Res(2013)9 on metals and alloys used in food contact materials and articles. - Specific Release of 23 Metals	PASS

Signed for and on Behalf of CTT:



Tony Ye
Technical Manager



Verification Report

This test report is issued by the company subject to its General Conditions of Services and accessible at <http://www.cttlab.com/order/202103190908290166.pdf>. The sample is provided by the applicant, our company is not responsible for the integrity, authenticity and identification information of the sample. Unless otherwise stated the results shown in this report only apply to the sample as received. Without prior written permission of the company, this test report cannot be reproduced, except in full. Any inquiry about this report, please raise from the date of receipt of the report within 30 days, overdue will not be accept. Items marked with "n" means they are not accredited by CNAS (if with CNAS logo), "s" means the item of subcontractor. All or part of items of this report are not in the accredited scope of CMA and cannot be as domestic social impartiality proof data.



Test Report

Report No.: CTT2312015455EN

Page 2 of 9

Test Result(s):

Specific Release of 23 Metals - Council of Europe Resolution CM/Res(2013)9 on metals and alloys used in food contact materials and articles.

Method: EDQM Technical Guide Resolution CM/Res(2013)9, analyzed by Inductively coupled plasma mass spectrometry (ICP-MS) or Inductively Coupled Plasma Optical Emission Spectrometer (ICP-OES).

Material No.	Test Item	Reporting Limit (mg/kg)	Limit (mg/kg)	Result (mg/kg)	Conclusion
1	Aluminum (1st+2nd)	2	35	N.D.	PASS
	Aluminum (3rd)	1	5	N.D.	
	Antimony (1st+2nd)	0.02	0.28	N.D.	
	Antimony (3rd)	0.01	0.04	N.D.	
	Arsenic (1st+2nd)	0.002	0.014	N.D.	
	Arsenic (3rd)	0.001	0.002	N.D.	
	Barium (1st+2nd)	0.2	8.4	N.D.	
	Barium (3rd)	0.1	1.2	N.D.	
	Beryllium (1st+2nd)	0.002	0.07	N.D.	
	Beryllium (3rd)	0.001	0.01	N.D.	
	Cadmium (1st+2nd)	0.002	0.035	N.D.	
	Cadmium (3rd)	0.001	0.005	N.D.	
	Chromium (1st+2nd)	0.100	1.750	N.D.	
	Chromium (3rd)	0.050	0.250	N.D.	
	Cobalt (1st+2nd)	0.002	0.14	N.D.	
	Cobalt (3rd)	0.001	0.02	N.D.	
	Copper (1st+2nd)	2	28	N.D.	
	Copper (3rd)	1	4	N.D.	
	Iron (1st+2nd)	2	280	N.D.	
	Iron (3rd)	1	40	N.D.	
	Lead (1st+2nd)	0.002	0.07	N.D.	
	Lead (3rd)	0.001	0.01	N.D.	
	Lithium (1st+2nd)	0.020	0.336	N.D.	
Lithium (3rd)	0.010	0.048	N.D.		
Manganese (1st+2nd)	0.2	12.6	N.D.		
Manganese (3rd)	0.1	1.8	N.D.		
Mercury (1st+2nd)	0.002	0.021	N.D.		
Mercury (3rd)	0.001	0.003	N.D.		
Molybdenum (1st+2nd)	0.02	0.84	N.D.		
Molybdenum (3rd)	0.01	0.12	N.D.		
Nickel (1st+2nd)	0.10	0.98	N.D.		

This test report is issued by the company subject to its General Conditions of Services and accessible at <http://www.cttlab.com/order/202103190908290166.pdf>. The sample is provided by the applicant, our company is not responsible for the integrity, authenticity and identification information of the sample. Unless otherwise stated the results shown in this report only apply to the sample as received. Without prior written permission of the company, this test report cannot be reproduced, except in full. Any inquiry about this report, please raise from the date of receipt of the report within 30 days, overdue will not be accept. Items marked with "n" means they are not accredited by CNAS (if with CNAS logo), "s" means the item of subcontractor. All or part of items of this report are not in the accredited scope of CMA and cannot be as domestic social impartiality proof data.



Test Report

Report No.: CTT2312015455EN

Page 3 of 9

Nickel (3rd)	0.05	0.14	N.D.
Silver (3rd)	0.01	0.08	N.D.
Silver(1st+2nd)	0.02	0.56	N.D.
Thallium (1st+2nd)	0.0002	0.0007	N.D.
Thallium (3rd)	0.0001	0.0001	N.D.
Tin (1st+2nd)	2	700	N.D.
Tin (3rd)	1	100	N.D.
Vanadium (1st+2nd)	0.002	0.07	N.D.
Vanadium (3rd)	0.001	0.01	N.D.
Zinc (1st+2nd)	2	35	N.D.
Zinc (3rd)	1	5	N.D.
Titanium (1st+2nd)	2	--	N.D.
Titanium (3rd)	1	--	N.D.
Magnesium (1st+2nd)	2	--	19
Magnesium (3rd)	1	--	26

- NOTE:**
1. mg/kg = milligram per kilogram (ppm).
 2. N.D. = Not Detected (Less than Reporting Limit).
 3. $S/V=8$ (dm^2/L), S=surface area, V= volume.
 4. Test condition: Artificial tap water 70°C for 2 hours.
 5. "--" = Not Applicable.

This test report is issued by the company subject to its General Conditions of Services and accessible at <http://www.cttlab.com/order/202103190908290166.pdf>. The sample is provided by the applicant, our company is not responsible for the integrity, authenticity and identification information of the sample. Unless otherwise stated the results shown in this report only apply to the sample as received. Without prior written permission of the company, this test report cannot be reproduced, except in full. Any inquiry about this report, please raise from the date of receipt of the report within 30 days, overdue will not be accept. Items marked with "n" means they are not accredited by CNAS (if with CNAS logo), "s" means the item of subcontractor. All or part of items of this report are not in the accredited scope of CMA and cannot be as domestic social impartiality proof data.



Test Report

Report No.: CTT2312015455EN

Page 4 of 9

Test Result(s):

Specific Release of 23 Metals - Council of Europe Resolution CM/Res(2013)9 on metals and alloys used in food contact materials and articles.

Method: EDQM Technical Guide Resolution CM/Res(2013)9, analyzed by Inductively coupled plasma mass spectrometry (ICP-MS) or Inductively Coupled Plasma Optical Emission Spectrometer (ICP-OES).

Material No.	Test Item	Reporting Limit (mg/kg)	Limit (mg/kg)	Result (mg/kg)	Conclusion
2	Aluminum (1st+2nd)	2	35	N.D.	PASS
	Aluminum (3rd)	1	5	N.D.	
	Antimony (1st+2nd)	0.02	0.28	N.D.	
	Antimony (3rd)	0.01	0.04	N.D.	
	Arsenic (1st+2nd)	0.002	0.014	N.D.	
	Arsenic (3rd)	0.001	0.002	N.D.	
	Barium (1st+2nd)	0.2	8.4	N.D.	
	Barium (3rd)	0.1	1.2	N.D.	
	Beryllium (1st+2nd)	0.002	0.07	N.D.	
	Beryllium (3rd)	0.001	0.01	N.D.	
	Cadmium (1st+2nd)	0.002	0.035	N.D.	
	Cadmium (3rd)	0.001	0.005	N.D.	
	Chromium (1st+2nd)	0.100	1.750	N.D.	
	Chromium (3rd)	0.050	0.250	N.D.	
	Cobalt (1st+2nd)	0.002	0.14	N.D.	
	Cobalt (3rd)	0.001	0.02	N.D.	
	Copper (1st+2nd)	2	28	N.D.	
	Copper (3rd)	1	4	N.D.	
	Iron (1st+2nd)	2	280	N.D.	
	Iron (3rd)	1	40	N.D.	
	Lead (1st+2nd)	0.002	0.07	N.D.	
	Lead (3rd)	0.001	0.01	N.D.	
	Lithium (1st+2nd)	0.020	0.336	N.D.	
Lithium (3rd)	0.010	0.048	N.D.		
Manganese (1st+2nd)	0.2	12.6	N.D.		
Manganese (3rd)	0.1	1.8	N.D.		
Mercury (1st+2nd)	0.002	0.021	N.D.		
Mercury (3rd)	0.001	0.003	N.D.		
Molybdenum (1st+2nd)	0.02	0.84	N.D.		
Molybdenum (3rd)	0.01	0.12	N.D.		
Nickel (1st+2nd)	0.10	0.98	N.D.		

This test report is issued by the company subject to its General Conditions of Services and accessible at <http://www.cttlab.com/order/202103190908290166.pdf>. The sample is provided by the applicant, our company is not responsible for the integrity, authenticity and identification information of the sample. Unless otherwise stated the results shown in this report only apply to the sample as received. Without prior written permission of the company, this test report cannot be reproduced, except in full. Any inquiry about this report, please raise from the date of receipt of the report within 30 days, overdue will not be accept. Items marked with "n" means they are not accredited by CNAS (if with CNAS logo), "s" means the item of subcontractor. All or part of items of this report are not in the accredited scope of CMA and cannot be as domestic social impartiality proof data.



Test Report

Report No.: CTT2312015455EN

Page 5 of 9

Nickel (3rd)	0.05	0.14	N.D.
Silver (3rd)	0.01	0.08	N.D.
Silver(1st+2nd)	0.02	0.56	N.D.
Thallium (1st+2nd)	0.0002	0.0007	N.D.
Thallium (3rd)	0.0001	0.0001	N.D.
Tin (1st+2nd)	2	700	N.D.
Tin (3rd)	1	100	N.D.
Vanadium (1st+2nd)	0.002	0.07	N.D.
Vanadium (3rd)	0.001	0.01	N.D.
Zinc (1st+2nd)	2	35	N.D.
Zinc (3rd)	1	5	N.D.
Titanium (1st+2nd)	2	--	N.D.
Titanium (3rd)	1	--	N.D.
Magnesium (1st+2nd)	2	--	18
Magnesium (3rd)	1	--	23

- NOTE:**
1. mg/kg = milligram per kilogram (ppm).
 2. N.D. = Not Detected (Less than Reporting Limit).
 3. $S/V=6$ (dm^2/L), S =surface area, V = volume.
 4. Test condition: Artificial tap water 70°C for 2 hours.
 5. "--" = Not Applicable.

This test report is issued by the company subject to its General Conditions of Services and accessible at <http://www.cttlab.com/order/202103190908290166.pdf>. The sample is provided by the applicant, our company is not responsible for the integrity, authenticity and identification information of the sample. Unless otherwise stated the results shown in this report only apply to the sample as received. Without prior written permission of the company, this test report cannot be reproduced, except in full. Any inquiry about this report, please raise from the date of receipt of the report within 30 days, overdue will not be accept. Items marked with "n" means they are not accredited by CNAS (if with CNAS logo), "s" means the item of subcontractor. All or part of items of this report are not in the accredited scope of CMA and cannot be as domestic social impartiality proof data.



Test Report

Report No.: CTT2312015455EN

Page 6 of 9

Test Result(s):

Specific Release of 23 Metals - Council of Europe Resolution CM/Res(2013)9 on metals and alloys used in food contact materials and articles.

Method: EDQM Technical Guide Resolution CM/Res(2013)9, analyzed by Inductively coupled plasma mass spectrometry (ICP-MS) or Inductively Coupled Plasma Optical Emission Spectrometer (ICP-OES) .

Material No.	Test Item	Reporting Limit (mg/kg)	Limit (mg/kg)	Result (mg/kg)	Conclusion
3	Aluminum (1st+2nd)	2	35	N.D.	PASS
	Aluminum (3rd)	1	5	N.D.	
	Antimony (1st+2nd)	0.02	0.28	N.D.	
	Antimony (3rd)	0.01	0.04	N.D.	
	Arsenic (1st+2nd)	0.002	0.014	N.D.	
	Arsenic (3rd)	0.001	0.002	N.D.	
	Barium (1st+2nd)	0.2	8.4	N.D.	
	Barium (3rd)	0.1	1.2	N.D.	
	Beryllium (1st+2nd)	0.002	0.07	N.D.	
	Beryllium (3rd)	0.001	0.01	N.D.	
	Cadmium (1st+2nd)	0.002	0.035	N.D.	
	Cadmium (3rd)	0.001	0.005	N.D.	
	Chromium (1st+2nd)	0.100	1.750	N.D.	
	Chromium (3rd)	0.050	0.250	N.D.	
	Cobalt (1st+2nd)	0.002	0.14	N.D.	
	Cobalt (3rd)	0.001	0.02	N.D.	
	Copper (1st+2nd)	2	28	N.D.	
	Copper (3rd)	1	4	N.D.	
	Iron (1st+2nd)	2	280	N.D.	
	Iron (3rd)	1	40	N.D.	
	Lead (1st+2nd)	0.002	0.07	N.D.	
	Lead (3rd)	0.001	0.01	N.D.	
	Lithium (1st+2nd)	0.020	0.336	N.D.	
Lithium (3rd)	0.010	0.048	N.D.		
Manganese (1st+2nd)	0.2	12.6	N.D.		
Manganese (3rd)	0.1	1.8	N.D.		
Mercury (1st+2nd)	0.002	0.021	N.D.		
Mercury (3rd)	0.001	0.003	N.D.		
Molybdenum (1st+2nd)	0.02	0.84	N.D.		
Molybdenum (3rd)	0.01	0.12	N.D.		
Nickel (1st+2nd)	0.10	0.98	N.D.		

This test report is issued by the company subject to its General Conditions of Services and accessible at <http://www.cttlab.com/order/202103190908290166.pdf>. The sample is provided by the applicant, our company is not responsible for the integrity, authenticity and identification information of the sample. Unless otherwise stated the results shown in this report only apply to the sample as received. Without prior written permission of the company, this test report cannot be reproduced, except in full. Any inquiry about this report, please raise from the date of receipt of the report within 30 days, overdue will not be accept. Items marked with "n" means they are not accredited by CNAS (if with CNAS logo), "s" means the item of subcontractor. All or part of items of this report are not in the accredited scope of CMA and cannot be as domestic social impartiality proof data.



Test Report

Report No.: CTT2312015455EN

Page 7 of 9

Nickel (3rd)	0.05	0.14	N.D.
Silver (3rd)	0.01	0.08	N.D.
Silver(1st+2nd)	0.02	0.56	N.D.
Thallium (1st+2nd)	0.0002	0.0007	N.D.
Thallium (3rd)	0.0001	0.0001	N.D.
Tin (1st+2nd)	2	700	N.D.
Tin (3rd)	1	100	N.D.
Vanadium (1st+2nd)	0.002	0.07	N.D.
Vanadium (3rd)	0.001	0.01	N.D.
Zinc (1st+2nd)	2	35	N.D.
Zinc (3rd)	1	5	N.D.
Titanium (1st+2nd)	2	--	N.D.
Titanium (3rd)	1	--	N.D.
Magnesium (1st+2nd)	2	--	16
Magnesium (3rd)	1	--	24

- NOTE:**
1. mg/kg = milligram per kilogram (ppm).
 2. N.D. = Not Detected (Less than Reporting Limit).
 3. $S/V=11$ (dm²/L), S=surface area, V= volume.
 4. Test condition: Artificial tap water 70°C for 2 hours.
 5. "--" = Not Applicable.

Test Material List

Material No.	Sample Description	Location
1	Silvery metal	Cup lining (A/C/D/F)
2	Silvery metal	Cup lining (B/E/H)
3	Silvery metal	Bottle lining (G)

This test report is issued by the company subject to its General Conditions of Services and accessible at <http://www.cttlab.com/order/202103190908290166.pdf>. The sample is provided by the applicant, our company is not responsible for the integrity, authenticity and identification information of the sample. Unless otherwise stated the results shown in this report only apply to the sample as received. Without prior written permission of the company, this test report cannot be reproduced, except in full. Any inquiry about this report, please raise from the date of receipt of the report within 30 days, overdue will not be accept. Items marked with "n" means they are not accredited by CNAS (if with CNAS logo), "s" means the item of subcontractor. All or part of items of this report are not in the accredited scope of CMA and cannot be as domestic social impartiality proof data.



Test Report

Report No.: CTT2312015455EN

Page 8 of 9

Photo of Sample:



This test report is issued by the company subject to its General Conditions of Services and accessible at <http://www.cttlab.com/order/202103190908290166.pdf>. The sample is provided by the applicant, our company is not responsible for the integrity, authenticity and identification information of the sample. Unless otherwise stated the results shown in this report only apply to the sample as received. Without prior written permission of the company, this test report cannot be reproduced, except in full. Any inquiry about this report, please raise from the date of receipt of the report within 30 days, overdue will not be accept. Items marked with "n" means they are not accredited by CNAS (if with CNAS logo), "s" means the item of subcontractor. All or part of items of this report are not in the accredited scope of CMA and cannot be as domestic social impartiality proof data.



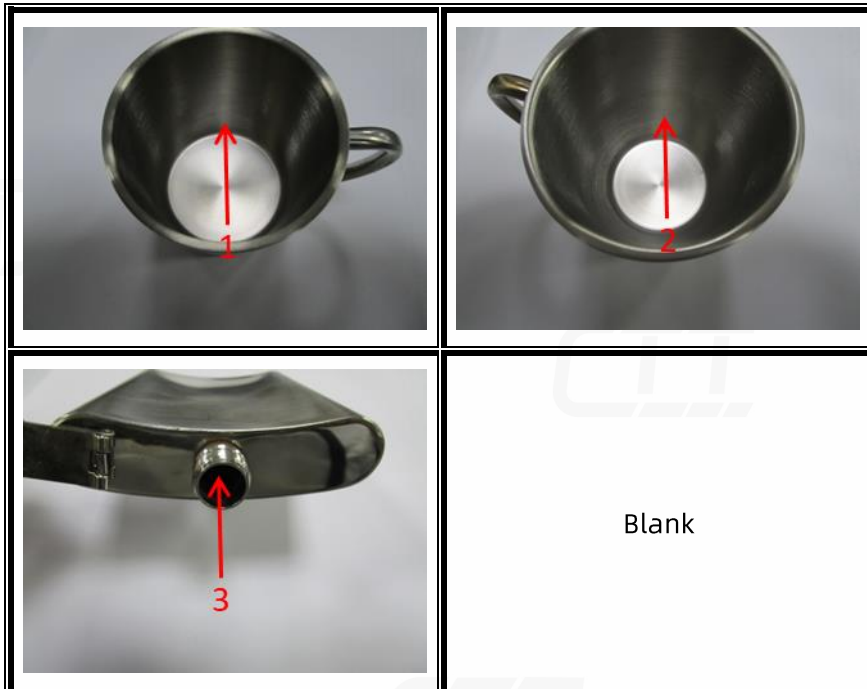
Test Report

Report No.: CTT2312015455EN

Page 9 of 9



Location indication:



End of Report

This test report is issued by the company subject to its General Conditions of Services and accessible at <http://www.cttlab.com/order/202103190908290166.pdf>. The sample is provided by the applicant, our company is not responsible for the integrity, authenticity and identification information of the sample. Unless otherwise stated the results shown in this report only apply to the sample as received. Without prior written permission of the company, this test report cannot be reproduced, except in full. Any inquiry about this report, please raise from the date of receipt of the report within 30 days, overdue will not be accept. Items marked with "n" means they are not accredited by CNAS (if with CNAS logo), "s" means the item of subcontractor. All or part of items of this report are not in the accredited scope of CMA and cannot be as domestic social impartiality proof data.

